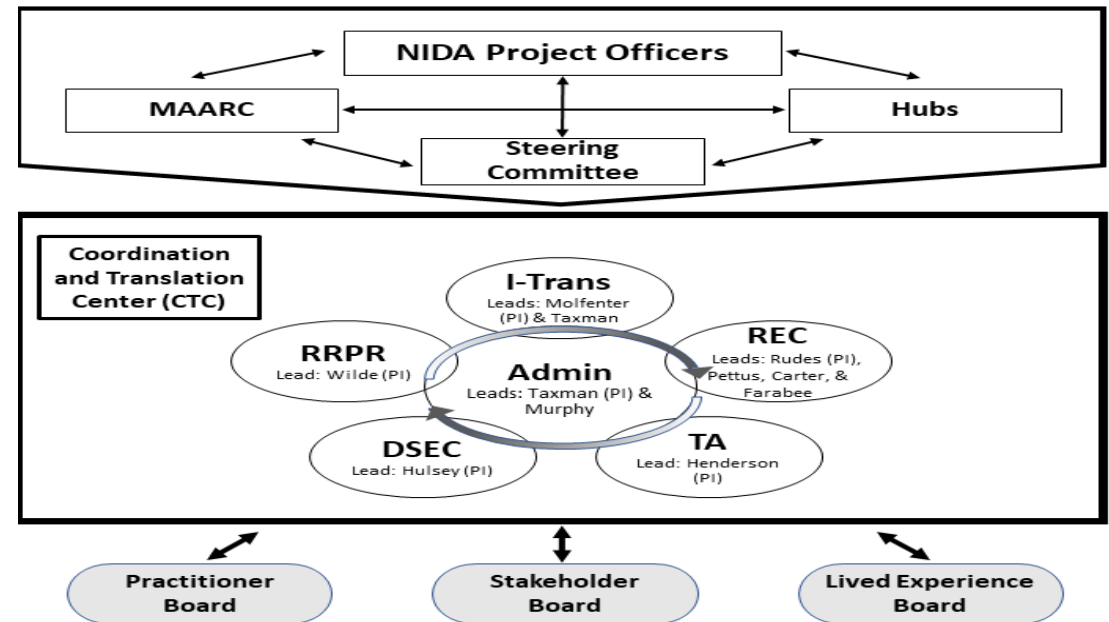


Coordination and Translation Center (CTC)



Meet the JCOIN Coordination and Translation Center (CTC)!

- Based at the Center for Advancing Correctional Excellence (ACE!) at George Mason University (GMU) (PI: Taxman), the CTC consists of six Cores that conduct research, engage stakeholders, disseminate findings, and provide support and infrastructure to JCOIN.
- CTC Leads: Faye Taxman, Ph.D., Danielle Rudes, Ph.D., and Carrie Pettus, Ph.D.



CTC Structure and Services

How does the CTC support JCOIN?

- Provides vital infrastructure, e.g., Box for file-sharing
- Develops and disseminates translational products to highlight clinical Hubs' work
- Provides educational content on relevant topics on the JCOIN Training and Engagement Center (JTEC)
- Hosts Practitioner and Stakeholder Advisory Boards
- Tracks publication and presentations from across the Network
- Hosts webinars that highlight the Network's work
- Provides training to early career investigators and practitioners who are interested in conducting research via LEAP (Learning Experiences to Advance Practice)
- Distributes small grants for pilot projects via J-RIG (JCOIN Rapid Innovations Grants)
- Convenes, records, and disseminates minutes for monthly Steering Committee calls as well as in-person meetings
- Provides free technical assistance
- Conducts original research grounded in implementation science
- Maintains CONNECT, a resource for bringing together researchers and practitioners with similar interests

But first... JCOIN Phase I Accomplishments

- **Administrative Core**
 - Developed Network infrastructure; built and maintained a website with over 300,000 pageviews; hosted 3 in-person and 4 virtual Steering Committee meetings; created the JCOIN Learning and Engagement Center (JTEC) and CONNECT tool
 - Lead: Faye Taxman, Ph.D.
- **JCOIN Rapid Innovations Grants (J-RIG) Core**
 - Built online application system, oversaw 8 funding cycles, reviewed 83 applications, and funded 13 projects, totaling \$1.4 million
 - Lead: Judith Wilde, Ph.D. (GMU)
- **Dissemination and Stakeholder Engagement Core**
 - Convened Stakeholder and Practitioner Boards which act as advisors; developed and disseminated nearly 100 explainers, summaries, and other translational products; partnered with justice/health associations to develop 19 JTEC courses with over 7,000 enrollments; distributed 120 email campaigns and received nearly 90,000 social media engagements
 - Leads: Jessica Hulsey (Addiction Policy Forum) and Joel Johnson (TASC)
- **Implementation and Translation Research Project Core**
 - Conducted multiple projects rooted in implementation science with over 1,000 enrollments; published several peer-reviewed articles
 - Leads: Faye Taxman, Ph.D. (GMU) and Todd Molfenter, Ph.D. (University of Wisconsin)
- **Research Education Core**
 - Engaged more than 600 people in Learning Experiences to Advance Practice (LEAP) training delivery at three levels: learner (anyone!), scholar (early career researchers), investigator (practitioners); developed 9 eLearning courses, including 3 focused on DEI; recorded 7 seasons of the Aced It podcast, which garnered over 16,000 downloads
 - Leads: Danielle Rudes, Ph.D. (Sam Houston State University) and Carrie Pettus, Ph.D. (Wellbeing & Equity Innovations)
- **Technical Assistance (TA) Core**
 - Fulfilled 105 TA engagements, reaching people in justice, behavioral health, and cross-disciplinary fields in 32 states; TA included connecting people to experts, sharing relevant resources, and 1-on-1 consultations
 - Lead: Ed McGarrell, Ph.D. (Michigan State University)

The JCOIN Phase II CTC Cores

- **Administrative Core**

- Network infrastructure, Steering Committee Support, JCOIN Learning and Engagement Center (JTEC)
- Leads: Faye Taxman, Ph.D., Amy Murphy (GMU), and Carrie Pettus, Ph.D. (Wellbeing & Equity Innovations)

- **JCOIN Rapid Innovations Grants (J-RIG) Core**

- Administration of pilot grants through an effective and efficient process that facilitates research and translation on emerging policies and practices
- Lead: Judith Wilde, Ph.D. (GMU)

- **Dissemination and Stakeholder Engagement Core**

- Outreach to and engagement of practitioners and leaders in the criminal legal and health fields; translation and dissemination of JCOIN research
- Lead: Jessica Hulsey (Addiction Policy Forum)

- **Implementation and Translation Research Project Core**

- Examination of the mechanisms of action in D/I strategies for translating scientific findings into widespread practice within legal and health agencies and improving outcomes at the organizational and individual levels
- Leads: Faye Taxman, Ph.D. (GMU) and Todd Molfenter, Ph.D. (University of Wisconsin)

- **Research Education Core**

- Learning Experiences to Advance Practice (LEAP) training delivery at three levels: learner (anyone!), scholar (early career researchers), investigator (practitioners)
- Leads: Danielle Rudes, Ph.D. (Sam Houston State University) and Carrie Pettus, Ph.D. (Wellbeing & Equity Innovations)

- **Technical Assistance Core**

- Expansion of JCOIN's reach to communities and organizations that are interested in reducing overdoses and SUD behaviors
- Lead: Howard Henderson, Ph.D. (Texas Southern University)

Technical Assistance (TA) Core Aims



TA Core lead Dr. Howard Henderson is the Founding Director of the Center for Justice Research and professor of Justice Administration at HBCU Texas Southern University.

- Provide access to information on research findings from JCOIN that are pertinent to advancing utilization and uptake of evidence-informed treatments and practices.
- Provide hands-on TA to facilitate implementation and uptake of research findings into practice using proven implementation strategies, including quality improvement strategies.
- Develop materials that address needs of stakeholders to implement evidence-informed practices.
- Advance health equity issues affecting the ability of individuals and communities to access needed prevention and treatment resources.
- Develop a list of SMEs with expertise in topics pertinent to health, CLS, community organizations.
- Develop new courses, toolkits, podcasts, and webinars related to overdose and SUDs, assisting practitioners with research and other needed topics.
- Expand the reach of JCOIN to provide more technical assistance to minoritized communities.

How Can the CTC Assist JCOIN Phase II Applicants?

- Please visit the JCOIN Phase II landing page at <https://www.jcoinctc.org/phase2/>
- The CTC is happy to assist with connecting researchers to potential justice and health partners and vice versa. You can explore partnerships via the Study Interest Board or CONNECT, or contact us directly.
- The CTC is making available JCOIN Phase I resources to applicants, such as translational products we developed and relevant eLearning courses such as “Research Partnerships.”

Learn more about the CTC: <https://www.jcoinctc.org>

Access CONNECT: <http://connect.jcoinctc.org>